
Classic Elite Yarns



Gigi Shawlette

Designed by: Susan Mills

Skill Level: Experienced

Finished Measurements: Approx 40" wide and 19" deep

YARN

Gigi by **Classic Elite Yarns**

(85% cotton, 10% silk, 5% polyester; 50 g = approx 142 yards)

6 balls 7346 Gulf Stream

NEEDLES

Long circular knitting needle in size US 4 (3.5 mm) **or size to obtain gauge**

OTHER MATERIALS

Stitch marker

GAUGE

22 sts and 44 rows = 4" in Garter Stitch, blocked. **Take time to save time, check your gauge.**

ABBREVIATIONS

approx: approximately

CO: cast on

dec('d): decrease(d)

est: establish(ed)

k: knit

k2tog: Knit 2 sts together (1 st decreased)

LH: left hand

p: purl

pm: place marker

rem: remaining

rep(s): repeat(s)

RH: right hand

RS: right side

sk2p: Slip 1 st knitwise, from the LH needle to the RH needle, k2tog, pass slipped st over knit st created by k2tog (2 sts decreased).

slm: slip marker

ssk: (slip, slip, knit): Slip 2 sts, 1 at a time, knitwise to the RH needle; insert tip of LH needle into the fronts of the two slipped sts and use RH needle to knit them together (1 st dec'd)

st(s): stitch(es)

WS: wrong side

yo: Yarn over (1 st increased)

PATTERN STITCHES

Garter Stitch (Gtr St): Knit all sts, every row.

Border: See chart.

NOTE: Circular needle is used to accommodate large number of sts; work back and forth in rows.

SHAWL

CO 358 sts.

Knit 1 row.

Est Border (RS): K2 (edge sts, keep in Gtr St throughout, not shown on chart), work Row 1 of chart (working each rep box 7 times), k2 (edge sts, keep in Gtr St throughout, not shown on chart) – 354 sts; 4 sts dec'd.

Work Chart as est through Row 12 – 334 sts.

Pm at center (167 sts in from each edge).

***Dec row (RS):** K2, ssk, k to 2 sts before marker, k2tog, slm, ssk, k to last 4 sts, k2tog, k2 – 4 sts dec'd.

Next row (WS): Knit.

Rep from * until 6 sts rem.

Last row (RS): Sk2p twice – 2 sts.

K2tog and fasten off.

FINISHING

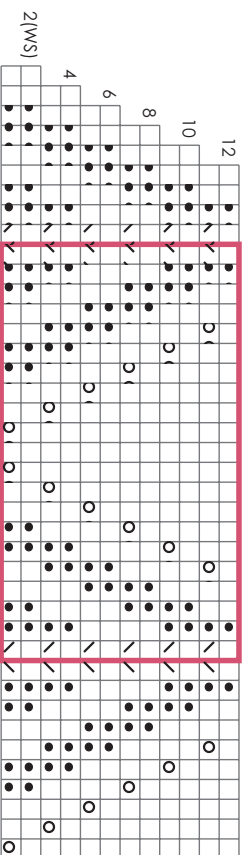
Weave in ends. Block to measurements.

Gigi Shawlette Chart

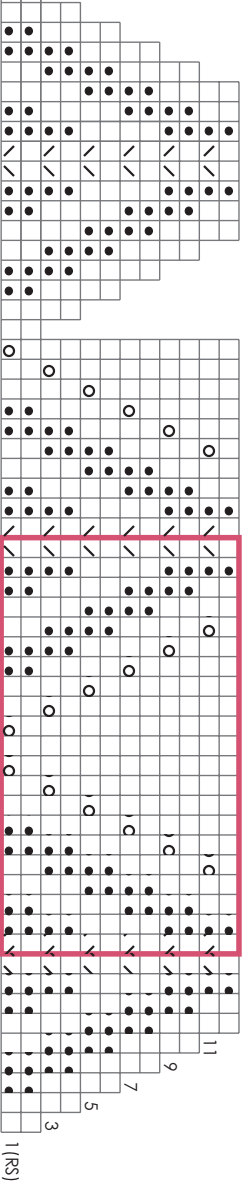
358 sts dec'd to 334 sts over 12 rows

(2 sts each edge in Garter stitch are not included in chart)

- K on the RS, P on the WS
- P on the RS, K on the WS
- K2tog
- Ssk
- Yo



Work this 21 st rep 7 times



Work this 21 st rep 7 times

1 (RS)