

## Albion Bloom Shawl

**Finished Measurements:** 47 ¼" tall, 76" wide

### Materials:

**Pima Rino:** 5—50g skein, color 0001

**Gauge:** 16 sts/21 ½ rows = 4" over Lace Pattern 1 after blocking

**Needles:** Size US 7 32" circular, 2 markers

**Pattern Notes:** Lace Pattern 1 and Border Pattern are repeatable; to change size of shawl, work more or less repeats of either or both.

### **Lace Pattern 1**

Row 1: k2, yo x2, p1, k1-tbl, k2.

Row 2: p2, p1-tbl, k2, p3.

Row 3: k2, yo x2, k1-tbl, p2, k1-tbl, k2.

Row 4: p2, p1-tbl, k2, p1-tbl, k1, p3.

Row 5: k2, yo x2, (p2, k1-tbl) 2x, k2.

Row 6: p2, (p1-tbl, k2) x2, k1, p3.

Row 7: k2, yo x2, p2, (p2, k1-tbl) 2x, k2.

Row 8: p2, (p1-tbl, k2) x2, k3, p3.

Row 9: k2, yo x2, p6, k1-tbl, p2, k1-tbl, k2.

Row 10: p2, (p1-tbl, k2) x2, k5, p3.

Row 11: k2, yo x2, p1, k1-tbl, p6, k1-tbl, p2, k1-tbl, k2.

Row 12: p2, p1-tbl, k2, p1-tbl, k6, p1-tbl, k2, p3.

Row 13: k2, yo x2, k1-tbl, p2, k1-tbl, p6, k1-tbl, p2, k1-tbl, k2.

Row 14: p2, p1-tbl, k2, p1-tbl, k6, p1-tbl, k2, p1-tbl, k1, p3.

Repeat these 14 rows for pattern.

### **Lace Pattern 2** (Multiple of 20 sts)

Row 1: k2, yo x2, (p2, k1-tbl) x2, \*p4, k2tog, yo, k1-tbl, p2, k1-tbl; rep from \* to last 2 sts, k2.

Row 2: p2, \*p1-tbl, k2, p1-tbl, p2, k4; rep from \* to last 10 sts, p1-tbl, k2, p1-tbl, k3, p3.

Row 3: k2, yo x2, p4, k1-tbl, p2, k-tbl, \*p3, k2tog, k1, yo, k1-tbl, p2, k1-tbl; rep from \* to last 2 sts, k2.

Row 4: p2, \*p1-tbl, k2, p1-tbl, p3, k3; rep from \* to last 12 sts, p1-tbl, k2, p1-tbl, k5, p3.

Row 5: k2, yo x2, p6, k1-tbl, p2, k1-tbl, \*p2, k2tog, k2, yo, k1-tbl, p2, k1-tbl; rep from \* to last 2 sts, k2.

Row 6: p2, \*p1-tbl, k2, p1-tbl, p4, k2; rep from \* to last 14 sts, p1-tbl, k2, p1-tbl, k7, p3.



Row 7: k2, yo x2, p1, k1-tbl, p6, k1-tbl, p2, k1-tbl, \*p1, k2tog, k3, yo, k1-tbl, p2, k1-tbl; rep from \* to last 2 sts, k2.

Row 8: p2, \*p1-tbl, k2, p1-tbl, p5, k1; rep from \* to last 16 sts, p1-tbl, k2, p1-tbl, k6, p1-tbl, k2, p3.

Row 9: k2, yo x2, k1-tbl, p2, k1-tbl, p6, k1-tbl, p2, k1-tbl, \*k2tog, k4, yo, k1-tbl, p2, k1-tbl; rep from \* to last 2 sts, k2.

Row 10: p2, \*p1-tbl, k2, p1-tbl, k4, p2; rep from \* to last 18 sts, p1-tbl, k2, p1-tbl, k6, p1-tbl, k2, p1-tbl, k1, p3.

Row 11: k2, yo x2, (p2, k1-tbl) x2, \*yo, ssk, p4, k1-tbl, p2, k1-tbl; rep from \* to last 2 sts, k2.

Row 12: p2, \*p1-tbl, k2, p1-tbl, p6; rep from \* to last 10 sts, p1-tbl, k2, p1-tbl, k3, p3.

Row 13: k2, yo x2, p4, k1-tbl, p2, k1-tbl, \*yo, k1, ssk, p3, k1-tbl, p2, k1-tbl; rep from \* to last 2 sts, k2.

Row 14: p2, \*p1-tbl, k2, p1-tbl, k3, p3; rep from \* to last 12 sts, p1-tbl, k2, p1-tbl, k5, p3.

Row 15: k2, yo x2, p6, k1-tbl, p2, k1-tbl, \*yo, k2, ssk, p2, k1-tbl, p2, k1-tbl; rep from \* to last 2 sts, k2.

Row 16: p2, \*p1-tbl, k2, p1-tbl, k2, p4; rep from \* to last 14 sts, p1-tbl, k2, p1-tbl, k7, p3.

ABBREVIATIONS: BO = bind off, CO = cast on, k = knit, k2tog = knit 2 sts together, p = purl, rep = repeat, RS= right side, ssk = slip 1 st as if to knit, slip a second st as if to knit, knit them together through the back loop, st(s) = stitch(es), tbl = through back loop, tog = together, WS = Wrong Side, yo = yarn over.

Row 17: k2, yo x2, p1, k1-tbl, p6, k1-tbl, p2, k1-tbl, \*yo, k3, ssk, p1, k1-tbl, p2, k1-tbl; rep from \* to last 2 sts, k2.

Row 18: p2, \*p1-tbl, k2, p1-tbl, k1, p5; rep from \* to last 16 sts, p1-tbl, k2, p1-tbl, k6, p1-tbl, k2, p3.

Row 19: k2, yo x2, k1-tbl, p2, k1-tbl, p6, k1-tbl, p2, k1-tbl, \*yo, k4, ssk, k1-tbl, p2, k1-tbl; rep from \* to last 2 sts, k2.

Row 20: p2, \*p1-tbl, k2, p1-tbl, p6; rep from \* to last 18 sts, p1-tbl, k2, p1-tbl, k6, p1-tbl, k2, p1-tbl, k1, p3. Repeat these 18 rows for pattern.

**Border Pattern** (Multiple of 20 sts)

Row 1: k2, yo 2x, k2tog, yo, k1-tbl, p2, k1-tbl, \*yo, ssk, k2, k2tog, yo, k1-tbl, p2, k1-tbl; rep from \* to last 2 sts, k2.

Row 2: p2, \*p1-tbl, k2, p1-tbl, p6; rep from \* to last 10 sts, p1-tbl, k2, p1-tbl, p2, k1, p3.

Row 3: k2, yo 2x, k2, k2tog, yo, k1-tbl, p2, k1-tbl, \*yo, ssk, k2, k2tog, yo, k1-tbl, p2, k1-tbl; rep from \* to last 12 sts, p1-tbl, k2, p1-tbl, p4, k1, p3.

Row 4: p2, \*p1-tbl, k2, p1-tbl, p6; rep from \* to last 2 sts, p2.

Row 5: k2, yo 2x, k4, k2tog, yo, k1-tbl, p2, k1-tbl, \*yo, ssk, k2, k2tog, yo, k1-tbl, p2, k1-tbl; rep from \* to last 2 sts, k2.

Row 6: p2, \*p1-tbl, k2, p1-tbl, p6; rep from \* to last 4 sts, k1, p3.

Row 7: k2, yo 2x, p1, k1-tbl, \*yo, ssk, k2, k2tog, yo, k1-tbl, p2, k1-tbl; rep from \* to last 2 sts, k2.

Row 8: p2, \*p1-tbl, k2, p1-tbl, p6; rep from \* to last 6 sts, p1-tbl, k2, p3.

Row 9: k2, yo 2x, k1-tbl, p2, k1-tbl, \*yo, ssk, k2, k2tog, yo, k1-tbl, p2, k1-tbl; rep from \* to last 2 sts, k2.

Row 10: p2, \*p1-tbl, k2, p1-tbl, p6; rep from \* to last 8 sts, p1-tbl, k2, p1-tbl, k1, p3.

Repeat these 10 rows for pattern.

**Lace Pattern 1**

CO 3 sts.

Row 1 (RS): knit across.

Row 2 (WS): k1, p2.

Rep Rows 1-2 once more.

Next Row (RS): k3, turn work quarter turn to the right, pick up and knit 1 st on side of work, turn work a quarter turn to the right, pick up and knit 2 sts across cast on edge. 6 sts.

Next Row (WS): p2, p1-tbl, k1, p2.

Setup Row (RS): work Lace Pattern 1 to end.

Continue as established, progressing in Lace Pattern 1 for 13 more rows (1 repeat of Lace Pattern 1 total). 20 sts.

**Lace Pattern 2**

Next Row (RS): work Lace Pattern 2 to end. 22 sts.

Continue as established, progressing in Lace Pattern 2 for 19 more rows (1 repeat of Lace Pattern 2 total). 40 sts.

Next Row (RS): work Lace Pattern 2 to end, repeating marked section to last 2 sts.

Continue as established, progressing in Lace Pattern 2 for 119 more rows (6 repeats of Lace Pattern 2, 7 repeats of Lace Pattern 2 total).

**Border Pattern**

Next Row (RS): work Border Pattern to end, repeating marked section to last 2 sts.

Continue as established, progressing in Border Pattern for 59 more rows (6 repeats of Border Pattern total).

BO all stitches using a stretchy method on the RS row.

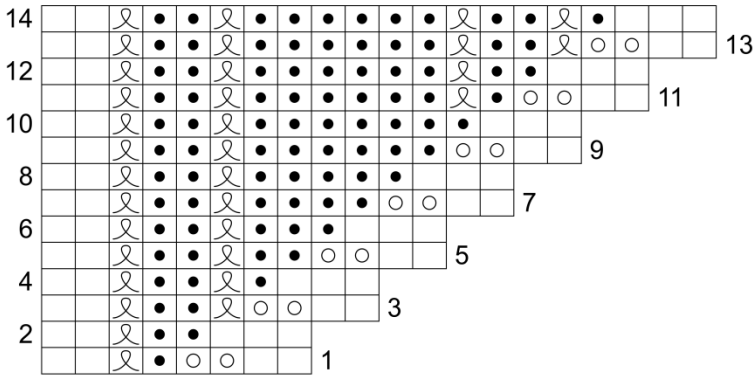
**Finishing**

Wet block to measurements. Weave in all ends.

©2018 Plymouth Yarn Company.

Designed by Meghan Jones

## Lace Pattern 1

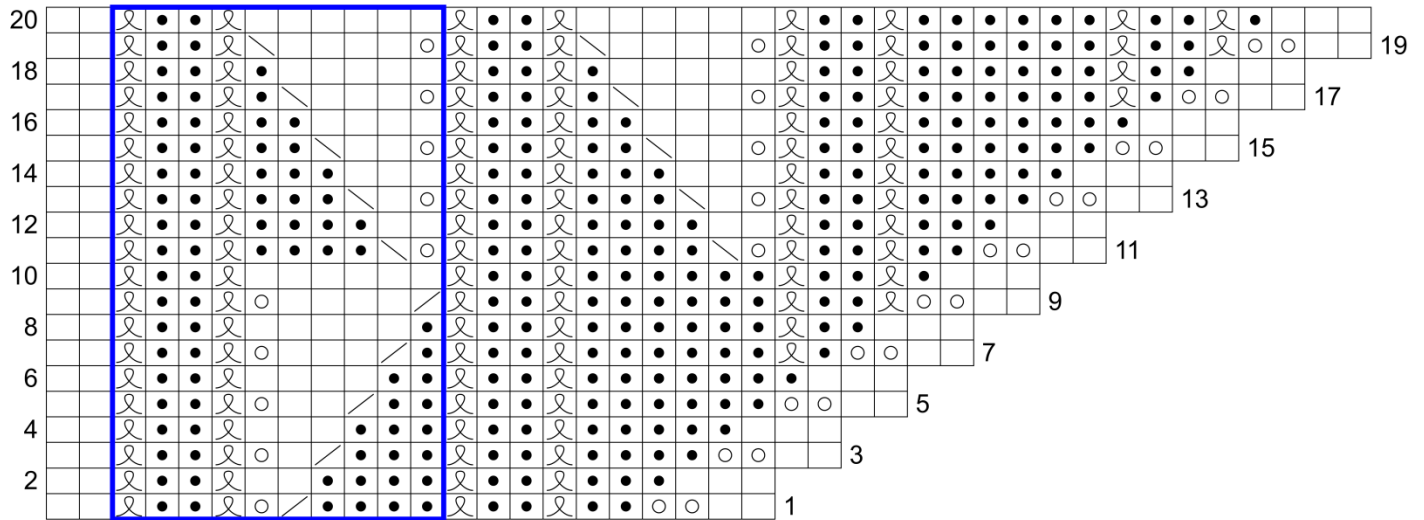






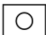

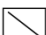
### Stitches

- RS: k; WS: p
- RS: p; WS: k
- RS: k-tbl; WS: p-tbl
- yo

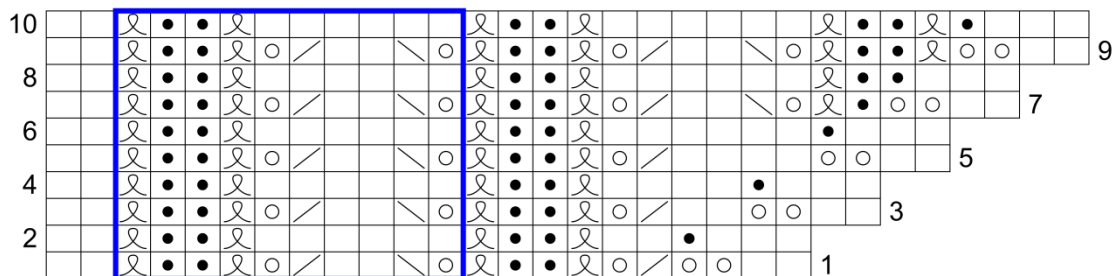
ABBREVIATIONS: BO = bind off, CO = cast on, inc'd = increased, k = knit, kfb = knit stitch, leaving stitch on left needle, knit into back loop of this stitch, p = purl, rep = repeat, RS= right side, sl = slip, ssk = slip 1 st as if to knit, slip a second st as if to knit, knit them together through the back loop, s2tog-k1-p2sso= slip 2 as if to knit, knit 1, pass 2 stitches over, st(s) = stitch(es), tbl = through back loop, tog = together, WS = Wrong Side, yo = yarn over.

## Lace Pattern 2



Stitches		Borders
	RS: k; WS: p	 Stitch Repeat
	RS: p; WS: k	
	RS: k-tbl; WS: p-tbl	
	yo	
	k2tog	
	ssk	

## Border Pattern



ABBREVIATIONS: BO = bind off, CO = cast on, inc'd = increased, k = knit, kfb = knit stitch, leaving stitch on left needle, knit into back loop of this stitch, p = purl, rep = repeat, RS= right side, sl = slip, ssk = slip 1 st as if to knit, slip a second st as if to knit, knit them together through the back loop, s2tog-k1-p2sso= slip 2 as if to knit, knit 1, pass 2 stitches over, st(s) = stitch(es), tbl = through back loop, tog = together, WS = Wrong Side, yo = yarn over.