

Headbands



Narrow Headband

design by Loren Cherensky

Play with cable size and placement on these snug Velcro-closed headbands, one a traditional Alice band, the other a cozy head warmer sized for the ski slopes.

STITCH GLOSSARY

3-st RC

Sl 2 sts to cn and hold to *back*, k1, k2 from cn.

3-st LC

Sl next st to cn and hold to *front*, k2, k1 from cn.

5-st RPC

Sl 2 sts to cn and hold to *back*, k3, p2 from cn.

5-st LPC

Sl 3 sts to cn and hold to *front*, p2, k3 from cn.

6-st RC

Sl 3 sts to cn and hold to *back*, k3, k3 from cn.

HEADBAND

Cast on 22 sts. Rep rows 1-12 of chart until headband measures 22"/56cm or desired length. Bind off in pat.

FINISHING

Sew velcro to ends of bands. ✪

SKILL LEVEL

■■■■■ INTERMEDIATE



MATERIALS

Esperanza by The Schaefer Yarn Company, 8oz/227g hanks, each approx 280yd/256m (lambswool/alpaca)

- 1 hank in Clara Barton (red)
- One pair size 7 (4.5mm) needles OR SIZE TO OBTAIN GAUGE
- Cable needle (cn)
- Sewing needle and thread to match yarn
- Velcro

SIZE

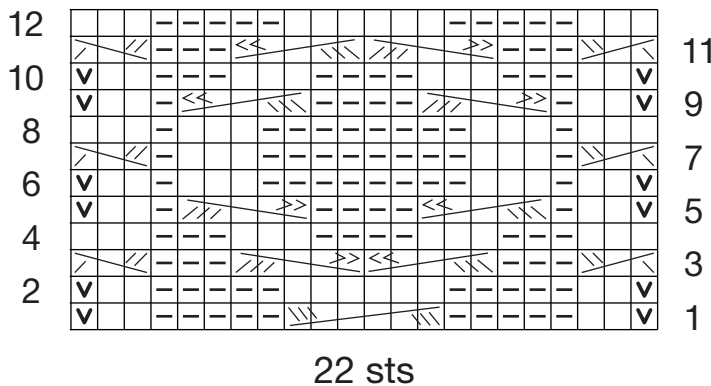
One size fits most.

MEASUREMENTS

Approximately 3 x 22"/7.5 x 56cm

GAUGE

29 sts and 26 rows to 4"/10cm over chart pattern using size 7 (4.5mm) needles. TAKE TIME TO CHECK YOUR GAUGE.



STITCH KEY

- | | | | |
|--------------------------|-------------------------------------|--|----------|
| <input type="checkbox"/> | k on RS, p on WS | | 3-st RC |
| <input type="checkbox"/> | p on RS, k on WS | | 3-st LC |
| <input type="checkbox"/> | sl 1 wyib on RS,
sl 1 wyif on WS | | 5-st RPC |
| <input type="checkbox"/> | | | 5-st LPC |
| | | | 6-st RC |

*For all pattern-related inquiries please visit www.knitsimplemag.com

Head Warmer

design by Loren Cherenksy

Play with cable size and placement on these snug Velcro-closed headbands, one a traditional Alice band, the other a cozy head warmer sized for the ski slopes.

STITCH GLOSSARY

SK2P

Sl 1, k2tog, pass slipped st over for dec 2.

3-st RC

Sl 2 sts to cn and hold to back, k1, k2 from cn.

3-st LC

Sl next st to cn, hold to front, k2, k1 from cn.

3-st RPC

Sl next st to cn, hold to back, k2, p1 from cn.

3-st LPC

Sl 2 sts to cn, hold to front, p1, k2 from cn.

5-st RPC

Sl 2 sts to cn, hold to back, k3, p2 from cn.

5-st LPC

Sl 3 sts to cn, hold to front, p2, k3 from cn.

6-st RC

Sl 3 sts to cn, hold to back, k3, k3 from cn.

MB (make bobble)

Row 1 (WS) K into front, back and front of next st, turn—3 sts.

Row 2 K3, turn.

Row 3 SK2P—1 st.

HEAD WARMER

Cast on 32 sts. Rep rows 1-12 of chart until headband measures 22"/56cm or desired length.

Bind off in pat.

FINISHING

Sew velcro to ends of bands. 🧵

SKILL LEVEL

🔴🔴🔴🔴 INTERMEDIATE

Miss Priss



MATERIALS

Miss Priss by The Schaefer Yarn Company, 4oz/113g hanks, each approx 280yd/256m (wool)

- 1 hank in spruce (green)
- One pair size 8 (5mm) needles OR SIZE TO OBTAIN GAUGE
- Cable needle
- Sewing needle and thread to match yarn
- Velcro

SIZE

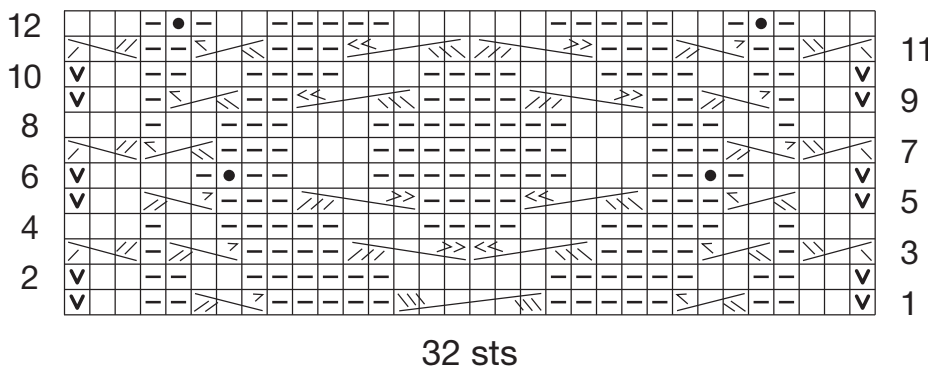
One size fits most.

MEASUREMENTS

Approximately 4 x 22"/10 x 56cm

GAUGE

32 sts and 26 rows to 4"/10cm over chart pattern using size 8 (5mm) needles. TAKE TIME TO CHECK YOUR GAUGE.



STITCH KEY

☐ k on RS, p on WS

☐ p on RS, k on WS

☐ 3-st RC

☐ 3-st LC

☐ 3-st RPC

☐ 3-st LPC

☐ 5-st RPC

☐ 5-st LPC

☐ 6-st RC

● make bobble (MB)

☐ sl 1 wyib on RS,
sl 1 wyif on WS

*For all pattern-related inquiries please visit www.knitsimplemag.com